



Along the Towpath

Presidents' Letter.....

As the fall colors are peaking and cooler weather takes over we pause to think about what we will put on our “to do” quilting lists for the winter months. We hope you are doing the same and including some contributions to our two-year service project. Cindy and Marilouise will have more to say about that in their article.

We have been to several quilt shows this summer and fall. All have been unique in their own way. We are still amazed at the awesome job that was done for the Towpath Quilt Show in July. We still hear people talking about it. It excites us that preparations are already underway for our Quilt Show in 2021. It seems like It is a long time away but with all the work that goes into making the show a success, time flies.

We are excited to let you all know that the quilt for our next Quilt Show is underway. The pattern and fabric have been chosen and sewers are hard at work to get the prep work done so others can help.

Barbara Smith is in the process of researching a venue for a retreat. If you know of a good place, please let her know.

We would like to thank each of you who volunteered to be a part of the Towpath Quilt Board and those working on committees for the 2019-2020 year. Without your volunteering, we would not have the Guild that has excellent speakers, workshops of all kinds and smaller groups working and learning together.

Please contact us if you have concerns or suggestions

REMINDER: We have Homer Hall until 4PM. Bring your sewing machine, hand-work, something to cut out, etc. Also bring a lunch.

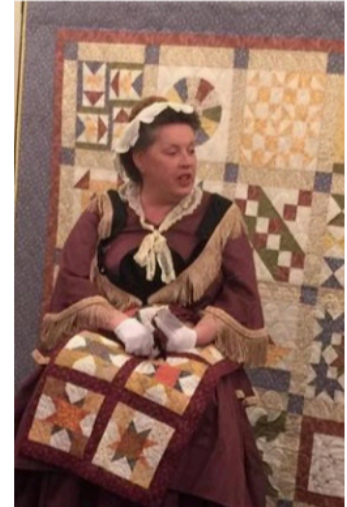
See you at our meetings,

Arlene and Barbara

Towpath Quilt Programs

November 12, 2019: The Quilt Lady, Cathleen Koons Wiggs

The Quilt Lady will be joining us in costume, to share her unique historically accurate happenings with fictional characters to tell the story of each quilt in the trunk show which accompanies the tale.



Help Save the “News Letter”

Technology is all around us and it has changed the way we communicate with other in Towpath Quilt Guild. We receive our news, announcements, and meeting and program information via email and our fabulous newly updated website. Even the new format of the monthly minder can bring us up to the minute information about activities of the guild. This makes us ask: what is the purpose of a clunky newsletter that only comes to us four times a year. Is it obsolete like many of our daily newspapers, or could we as a guild reinvent it as something that was fun to read and helped to create a stronger, livelier quilting community?

Let's try something new! For the February issue, share a favorite or strange store you or your mother or grandmother used to shop for fabrics. You don't have to write anything up just the place and the name. If you have a story please include it.

Noel's note: I didn't move here until I was almost 50 so I won't have many local places, but a few years after I moved here I was in Liverpool attending a seminar for work and I saw Chickadee on a door during the break for lunch. I walked in and thought I was in heaven. I had been too busy raising my kids, getting them into college and working to search for a quilt shop, and here I found one by accident.

Don't forget to photograph all those quilts and sewn gifts you make for Christmas presents, and send those pictures in for the February issue.

Send everything any anything else interesting to noelkeith@icloud.com (Put Towpath Newsletter in the subject line)



Mystery Quilt

Please sign up for the 2019 Mystery Quilt. This is a much easier pattern than the last one. It's very modern in feel and I think you'll like it when you're finished, That's my hope, anyway. There are only 6 parts, so we should be done by May of 2020. You can make any size you'd like and in fact, the pattern gives you the figures for a larger than lap size quilt and a queen size quilt. We are starting Part 2 in November but it's not too late to sign up. I am sending the parts out by email this year in order to save on postage but will gladly send a paper copy to anyone who would prefer that over email.

The pattern uses;

- fabric that will be used at a foundation so it can be anything that's big enough for the purpose
- Lights and Medium Darks and she gives you some examples
- dark fabrics, mostly scraps from your stash
- Focus fabric to be used thru-out the pattern

There!! I've told you all I can to get you excited about this project. Don't forget I am not opposed to showing you a picture if you would like to see what you're going to be making. Sign Up Today! I even take sign-ups thru email.

Bonnie Haaland "Leader of the Unknown!"



Pet Bed Project

Pet bed project update – a huge thank you to all members who have been bringing in their leftover scraps of fabric, batting, etc. Larger pieces that are donated will be used for the January Service Project. So it is a win-win all around, you free up space in your sewing area, dogs/cats have a comfy bed to sleep in and residents at the YMCA will have a warm quilt to sleep under. Since the quilt show in July, over 80 pet beds have been donated to the CNY SPCA. Yes 80!

My heart is warmed by all of the generosity of our members. I will place a bin by the kitchen door at the meetings so you don't have to hunt for me at the meetings.

Cindy Griffin



January Service Project

Service Project Update - We are excited to be creating warm blankets for the Downtown YMCA Mens' Residence for our Service Project for not only 2019-2020 but also for 2020-2021. We are hoping to provide approximately 140 quilts and/or fleece blankets over the 2 year time frame. Quilts will be Twin XL (64 x 93). Fleece blankets will be width of fabric (60") X 2 1/2 yards fleece, which allows for hems all around.

The recipients are homeless adult men, many of whom are veterans, who have found shelter at the YMCA. There are also 30 senior adults in a separate facility.

Many members have already donated fabric, batting and fleece blankets. We have over a dozen finished quilts/fleece blankets so far so we are well on our way to our goal!

In January, we will assemble quilts using the stitch and flip method. We have used this method in the past and it was very successful. If you are unable to attend our Service Project day in January but would like to create a quilt, we will have batting pre-cut at the November meeting. If you would like to pre-cut fabric strips for January, please cut 6" wide strips (9 of one pattern and 8 of a coordinating fabric).

Sign up sheets will be available at the November meeting for sewers, pinners and cutters, etc.

Cindy Griffin And Marilouise Mattson

Fat Quarter Raffle

Take a chance to grow your stash. Bring a fat quarter to each meeting to be in a drawing to win a big bunch of like minder fat quarters.

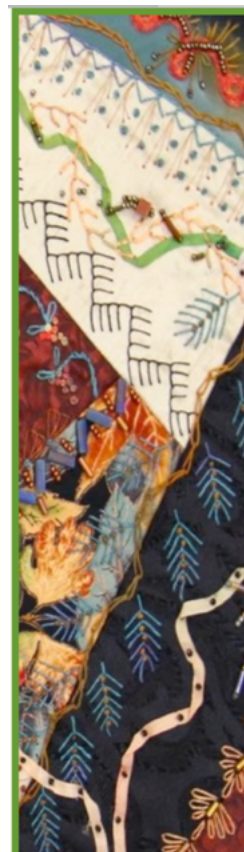
Nov.—Greys

Dec.—Blues

March—Ugly Fabric

April—Past3ls

May —Polka Dots



Divine Threads

*Embellishments
And
Crazy Quilting
Supplies*

*Embroidery Threads
Felt Ribbons
Felt Fabrics
Trims
Beads
Patterns*

*Divine Threads, LLC
8414 Hobnail Rd
Manlius, New York 13104
www.divinethreadstl.com
315-682-1565 fax: 315-682-1585*

Limestone Threads



Barbara Smith
Online Fabric Retailer
315-622-8601

www.limestonethreads.com

Limestonethreads@outlook.com



A Report from the New Member Tea

October twenty ninth was a beautiful fall day for guild members to meet at Jennifer DeVivo's home in Fayetteville to greet our new Towpath members. Seven "veteran" members welcomed the five new members as the group enjoyed refreshments and shared some background on their quilting journeys. We heard about the husband who thought quilting would be a thrifty hobby for his wife and the one who promised a new sewing machine if his wife, one of our new members, would take scuba diving lessons with him. So, to maintain her motivation while she was swimming around the watery depths, she kept picturing her new machine in place at home. Our group included some quilters who had previously sewn garments and home dec items and some who began to sew only when the lure of quilting called their names. There was agreement that we quilters in Towpath represent an admirable cross section of styles, inspiring us to try new techniques and color palettes while learning from each other.

There are also three new members who were not able to attend the tea. One gal called me from the International Quilt Festival in Houston to tell me she would be unable to attend. That definitely made an impression on me! At our monthly meetings, be sure to keep your eye out for name tags that say NEW so you can join in welcoming our new members and in making them feel at home.

Shirley Robinson

baby lock

Handi Quilter
OFFICIAL RETAILER

accuquilt
Let's make quilts... the better way!

kangaroo cabinets

elna
SWISS DESIGN

CalicoGals
HOME OF ROW BY ROW EXPERIENCE

Sewing Machines

BEAUTIFUL FABRICS

15
JULY

SEWING EVENTS

Classes FUN

LEARN MORE AT CALICOGALS.COM

VISIT US AT
3906 New Court Avenue • Syracuse



Alan and Marsba (315) 676-7737
T-Th-11 AM-6 PM agrsewing.com
Wed-Fri 11 AM-5 PM Sat 10 AM-3 PM

AGR SEWING MACHINE SALES & SERVICE
At Your Service since 1971
"To know your machine is to enjoy your machine"
FREE one on one machine instruction
123 US ROUTE 11
CENTRAL SQUARE, NY 13036

JANOME All Major Credit Cards
Sewing Serging, Embroidery Financing Available



Heather Kojan showing one of her early quilts as she told her story of moving from traditional quilting to modern quilts at the October meeting.



Down Memory Lane

Who remembers this occasion? And why was this saved when so much was lost on Noel's computer. Let's see if we can identify all these terrific quilters in the February issue



JUST FOR EWE QUILTING



LONGARM QUILTING SERVICES

Longarm quilting: Custom and all over designs

Custom Projects: Memory quilts, t-shirt, quilts & more

Quilt Bindings: Hand sewn, machine sewn, with or without a flange

*Large and small items accepted!
Most quilts ready in 2-3 weeks!*

Wenda Coburn
315-345-4604
wenda@wendacoburn.com

February Workshops

February can be a long, lonely cold months Towpath Quilt Guild gives you a chance to get together with friends and learn something new. The workshops are held February 12 tour usual meeting place, Fayetteville First Methodist Church. Classes begin at 10:00 but come early to set up. Bring your lunch and a snack to share. Coffee and tea will be provided. In case of extreme weather we will cancel if the FM schools are closed that day.

Sign up will be at the November and December meetings in the kitchen. Class samples and materials lists will be available at that time.

Here are the classes for the Feb. workshops

Glenda Coburn—Quilted Name tag Holder

Arlene King—Snippets

Sally Beckwith—Machine quilting with quilting Westalee rulers (class size limited to 6)

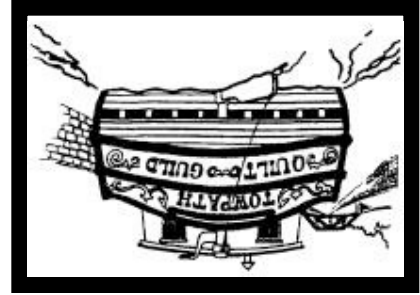
Nancy Sellers—Paper Piecing

Shirley Robinson—Piecing Surprise Stars

Open Sewing

Noel Keith and Gaynell Dorrance





13066
 FAYETTEVILLE, NY
 BOX 188
 TOWPATH QUILT GUILD

Along the Towpath...

Towpath Quilt Guild meets at 9:30 AM on the second Tuesday of the month at United Methodist Church of Fayetteville, Genesee Street, Fayetteville, NY. In the event of bad weather, we follow the Fayetteville-Manlius school closings.

Annual dues are \$25.00 payable at the September meeting. Members save \$5.00 by registering by mail before September 1st. Guests are welcome to attend a maximum of two meetings at \$3.00 per meeting. After that time the fees may be applied to the annual dues.

The guild newsletter, **Along the Towpath**, is published four times a year and is included in the annual dues. Non-members may subscribe to the newsletter for \$5.00 per year by contacting the editor. Cut off dates for receiving new material are, Jan. 15, April 15, July 15, and October 15.

Ads will be published at the following per issue rates:

- Classified-3 line \$5.00
- Business card size \$8.00
- 1/4 page \$14.00
- 1/2 page \$20.00
- Full page \$26.00
- (Each member can place one free 3-line ad per year)

Towpath Quilt Guild Board of Directors

- Co Presidents- Barbara Western/ Arlene King
- Co Vice presidents- Missy Albert/ Terri Feola
- Recording Secretary - Jeannine Lloyd
- Corresponding Secretary- Barbara Smith
- Treasurer- Bonnie Haaland
- Membership Chair-Jan Sernett and Elaine Lyon
- Program Chair - Suzy Tankersley
- Historian- Wenda Coburn
- Librarian- Karen Arnold
- Immediate past presidents- Ann Lamprey and Ann Rowland
- Newsletter - Noel Keith and Elaine Lyon
- Consortium Delegates- Cathy Lee and Suzy Tankersley
- Email Communication - April Lazarus
- Website Liaison- Robin Brennan
- Quilt Show- Ann Rowland
- January Service project- Cindy Griffin and Marilouise Mattson
- SCRAPS- Cathy Lee
- Holiday lunch- Donita Whalen
- February Workshop- Noel Keith and Galnell Dorrance
- June Picnic- Karen Green
- August Workshop- Cathy Lee and Kathie Kline
- State Fair Coordinator- Lois Weston
- National Quilt Day - Michelle Ricci
- Hospitality - Shirley Robinson
- Retreat- Barbara Smith/ Suzy Tankersley
- FQ Exchanger - Fran O'Donnell
- Mystery Quilt- Bonnie Haaland